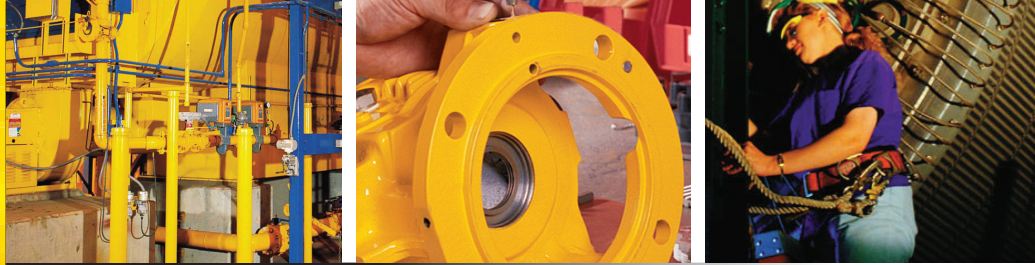


KPC 820(E)

APPLICATION AREAS

- Efficiently removes oily deposits, soot, metal working fluids, animal and vegetable fats, lubrication compounds, other soils common to industrial production areas



PRODUCT DATA SHEET

KEY FEATURES AND BENEFITS

- Non-flammable
- Highly dilutable
- Cleans quickly and efficiently
- Biodegradable
- Safe on most metals
- NSF A1, A4 Registration Number 156904

PACKAGING

1 Gallon/3.8L
20L
208L
1000L

DIRECTIONS

Dilute to desired strength. The product can be used in most types of parts washers or applied with mop, brush, sponge or spray. If necessary use stiff brush or cloth to loosen tough dirt.

DESCRIPTION

Chesterton KPC 820(E) is much more than a simple "green" cleaner - it is a powerful performer that works in heavy industry as well as light commercial and institutional facilities. Chesterton® KPC 820(E) is the premium product of choice when searching for an environmentally compliant solution to your plant's degreasing needs. It is an oil and grease cutting liquid, completely miscible in water. Containing no chlorinated solvents, caustics, butyl compounds, phosphate or petroleum distillates, When used at elevated temperatures, the cleaning action is accelerated. The heaviest grime can be removed easily at temperatures of 60°C to 82°C. To meet individual cleaning requirements and determine needed solution strengths, field evaluation is necessary. The heaviest industrial grime may require a more concentrated solution, while light soils can be removed with as little as a 1-2% concentration.

Typical Physical Properties

Appearance	Green clear transparent liquid
Odor	Mild/sweet
Flash Point	None
Specific Gravity	1,05
Solubility in Water	Complete
pH (Concentrate)	9,9
Boiling Point	100°C
Fire Point	None
Freezing Point	0°C (32°F)
Freeze Thaw Stability	Passed 6 cycles

RECOMMENDED MINIMUM CONCENTRATIONS (IN WATER)

General Cleaning	5%
Heavy Grime	15%
Light Cleaning	3%
Machining Fluids	3%
Waxy Films	30%
Soot, Diesel Fuels	5%

Before using this product, please refer to Safety Data Sheet (SDS).